

D U C T M A T E

ULTIMATE™ DOOR

ULTIMATE™ DOOR II
WELD ON



**CUSTOM
SIZES NOW
AVAILABLE!**



U.L. Rated Grease Duct Doors

Easy To Install Sandwich® / Weld On Designs

- UL 1978 listed
- Dramatically reduces installation time
- No special tools required
- Union made in the U.S.A
- Available in a variety of sizes
- Grease and liquid tight
- Meets NFPA 96 standards

DUCTMATE®
Industries
A DMI COMPANY

ULTIMATE™ DOOR

DESCRIPTION

Sandwich® style access door for grease duct or high temperature applications.

BASIC USE

To provide easy access into high temperature air ducts and grease duct systems. This door was designed for applications requiring UL 1978 Listing.

SPECIAL CHARACTERISTICS

- UL 1978 Listed
- Easy to install sandwich design with no special tools required
- Minimal penetration into the duct
- Dramatically reduces installation time
- No welding required
- Grease and liquid tight
- Meets NFPA 96 Standards
- Union made in the U.S.A.
- Available in a variety of sizes
- Door is completely removable for easy cleaning
- Can be used with all types of duct wrap insulation systems
- No need for any clips
- No need for any drilling
- Unique collapsible handle design for easy installation

TECHNICAL INFORMATION

PANELS

The ULTimate Access Door consists of two layers of 11 gauge steel (also available in Stainless 304). Steel door must be used on steel duct and stainless door must be used on stainless duct.

GASKET

High temperature ceramic board, rated to 2300°. Completely covers the surface of the outer plate

FASTENERS

Two threaded fasteners are welded to the inner door and one fastener in each corner.

TEMPLATE

Self adhesive template is provided for the exact size of duct opening required.

UL DOOR INSULATION PLATE

Manufactured from 16 gauge black iron. For use with a wrap system. *(Sold separately or as a kit)*

UL DOOR INSULATION HARDWARE

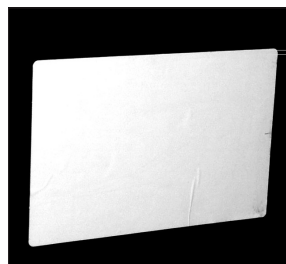
Consists of four 8" extension studs, washers, fasteners, "Do Not Obstruct" Sticker, and installation instructions. *(Sold separately or as a kit)*

LIMITED PRODUCT WARRANTY

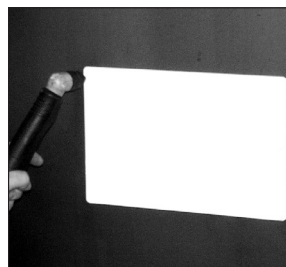
** See Back Panel



INSTALLATION INSTRUCTIONS

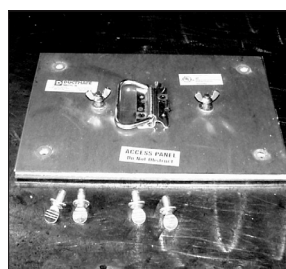


1. Peel backing off template and apply to duct in desired location.



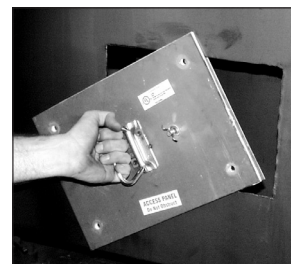
2. Cut around edge of the template.

Be sure to remove all burrs and slug from the cut opening to reduce potential tearing of the gasket during installation and removal of the access door.

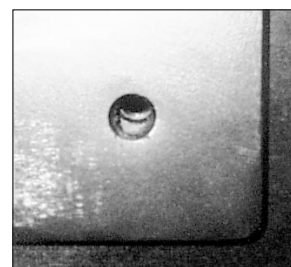


3. Remove the perimeter fasteners from the door assembly and loosen the two center fasteners, but do not remove.

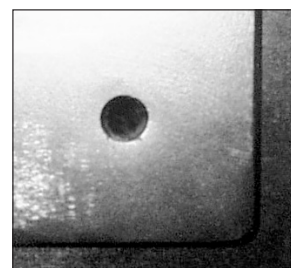
If using a 6" sandwich door, all perimeter fasteners and one center fastener must be removed. Insert the door into the opening at an angle and then center the door and install fasteners.



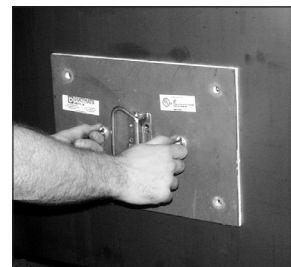
4. Insert the door into the opening at an angle and then center the door.



- 4a. NOT CENTERED
If you can see the wall of the duct through any of the corner holes, then it is not centered.



- 4b. CENTERED
If you can not see the wall of the duct through any of the corner holes, then it is centered.



5. Tighten all fasteners.

PACKAGING INFORMATION AND SIZING GUIDELINES

Ultimate™ Door

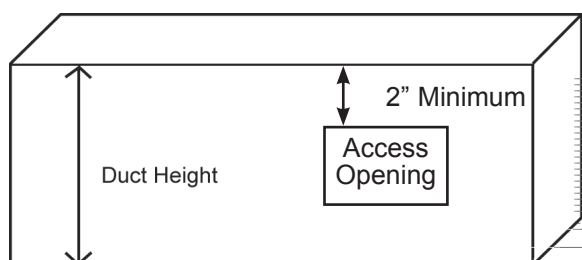
* Insert S4 for Stainless Steel (provided with Stainless Steel hex bolts)

For D1212UL/D1212ULWS Stainless Steel is a special order and may take additional time.

* Insert BI for Black Iron

Part #	Description	Opening Size	Door Size	Minimum Duct Height	Packaging Quantity	Weight
D66UL*	UL Door Only	6" x 6"	8" x 8"	13"	5	25.3 lbs.
D66ULWS*	UL Door with Insulation Kit and 12" x 12" Outer Plate	6" x 6"	8" x 8"	13"	5	45.0 lbs.
D720UL*	UL Door Only	7" x 20"	9" x 22"	13"	3	36.0 lbs.
D720ULWS*	UL Door with Insulation Kit and 13" x 26" Outer Plate	7" x 20"	9" x 22"	13"	3	52.0 lbs.
D106UL*	UL Door Only	10" x 6"	12" x 8"	12"	5	39.0 lbs.
D106ULWS*	UL Door with Insulation Kit and 16" x 12" Outer Plate	10" x 6"	12" x 8"	12"	5	63.0 lbs.
D1010UL	UL Door Only	10" x 10"	12" x 12"	17"	5	57.0 lbs.
D1010ULWS*	UL Door with Insulation Kit and 16" x 16" Outer Plate	10" x 10"	12" x 12"	17"	5	70.0 lbs.
D128UL*	UL Door Only	12" x 8"	14" x 10"	14"	5	55.9 lbs.
D128ULWS*	UL Door with Insulation Kit and 18" x 14" Outer Plate	12" x 8"	14" x 10"	14"	4	70.0 lbs.
D1212UL*	UL Door Only	12" x 12"	14" x 14"	19"	2	24.01 lbs.
D1212ULWS*	UL Door with Insulation Kit and 18" x 18" Outer Plate	12" x 12"	14" x 14"	19"	2	43.56 lbs.
D1612UL*	UL Door Only	16" x 12"	18" x 14"	18"	2	25 lbs.
D1612ULWS*	UL Door with Insulation Kit and 22" x 18" Outer Plate	16" x 12"	18" x 14"	18"	2	54.68 lbs.
D1814UL*	UL Door Only	18" x 14"	20" x 16"	20"	2	48.0 lbs.
D1814ULWS*	UL Door with Insulation Kit and 24" x 20" Outer Plate	18" x 14"	20" x 16"	20"	2	68.0 lbs.
D2020UL*	UL Door Only	20" x 20"	22" x 22"	26"	1	36.0 lbs.
D2020ULWS*	UL Door with Insulation Kit and 26" x 26" Outer Plate	20" x 20"	22" x 22"	26"	1	49.0 lbs.
D2418UL*	UL Door Only	24" x 18"	26" x 20"	24"	1	39.6 lbs.
D2418ULWS*	UL Door with Insulation Kit and 30" x 24" Outer Plate	24" x 18"	26" x 20"	24"	1	50.63 lbs.
ULINSULKIT	Kit 1: Four 8" extension studs, washers, fasteners, "Do Not Obstruct" stickers, and installation instructions				5	1.12 lbs.
OP_UL* INSERT SIZE	Kit 2: UL Door Outer Plate				1	Consult Factory

Custom Sizes Available Upon Request - Additional lead times may apply



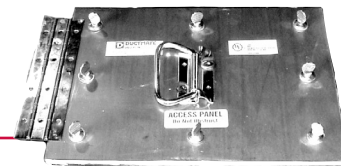
In order to use the minimum duct height, the door must be installed with its longest dimension running horizontally along the length of the duct. If the minimum duct height is used, the top of the opening must be 2" from the top of the duct. For every inch over the minimum duct height, the opening can be lowered 1" from the top of the duct.

Listed
88VF
Fittings for Hood and
Duct Penetration
Grease Duct Access Door



ULTIMATE™ DOOR II

WELD ON



DESCRIPTION

Weld on style access door for grease duct or high temperature applications.

BASIC USE

To provide easy access into high temperature air ducts and grease duct systems. This door was designed for applications requiring UL 1978 Listing.

SPECIAL CHARACTERISTICS

- UL 1978 Listed
- Available with optional hinge
- No special tools to remove
- Minimal penetration into the duct
- Dramatically reduces installation time
- Grease and liquid tight
- Meets NFPA 96 Standards
- Union made in the U.S.A.
- Available in a variety of sizes
- Can be used with all types of duct wrap insulation systems
- No need for any clips
- No need for any drilling
- Unique collapsible handle design for easy installation
- Top plate is completely removable for easy cleaning

TECHNICAL INFORMATION

PANELS

The ULTIMATE II WELD ON access door consists of two layers of 11 gauge steel (also available in stainless 304). Steel door must be used on steel duct and stainless door must be used on stainless duct.

GASKET

High temperature ceramic board, rated to 2300°.

FASTENERS

Zinc plated fasteners.

TEMPLATE

Self adhesive template is provided for the exact size of duct opening required.

UL DOOR INSULATION OUTER PLATE

Manufactured from 16 gauge black iron. For use with a wrap system. *(Sold separately or as a kit)*

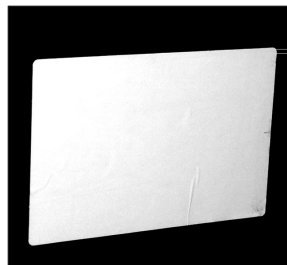
UL DOOR INSULATION HARDWARE

Consists of four 8" extension studs, washers, fasteners, "Do Not Obstruct" Sticker, and installation instructions.
(Sold separately or as a kit)

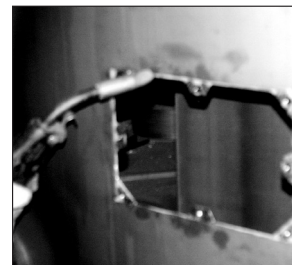
LIMITED PRODUCT WARRANTY

** See Back Panel

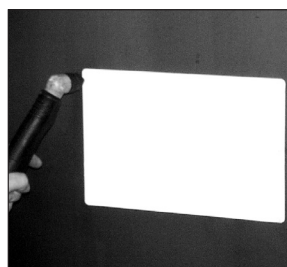
INSTALLATION INSTRUCTIONS



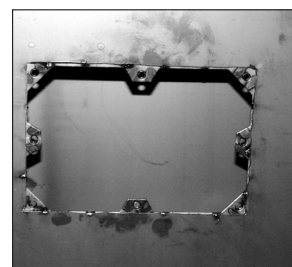
1. Peel backing off template and apply to duct in desired location.



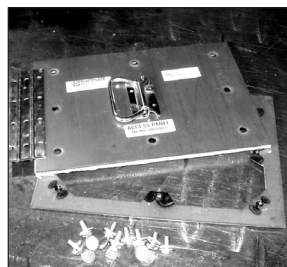
5. Attach with tack welds 2" apart.



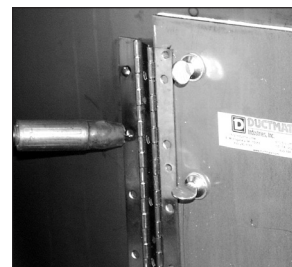
2. Cut around edge of the template.



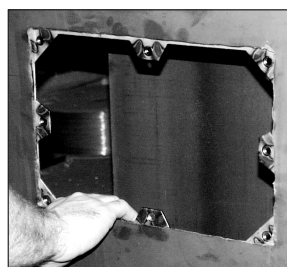
6. Correctly installed frame.



3. Remove the fasteners and separate door from frame.



7. Install the fasteners with washers. For hinged door, position hinge on duct wall and plug weld.



4. Center the frame around the opening.



- * If using the frame on the outside of the duct, a continuous liquid tight weld is required. Care should be taken to not warp the frame when welding.

PACKAGING INFORMATION AND SIZING GUIDELINES

Ultimate™ Door II WELD ON

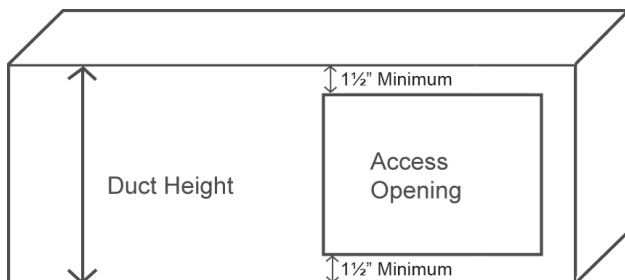
* Insert S4 for Stainless Steel (provided with Stainless Steel hex bolts)

* Insert BI for Black Iron

Items in **Bold** refer to hinged doors - To indicate which side the hinge is located on when ordering, enter the side you would like the hinge on as the second number in the part number (ex: in DWH1814ULBI, the hinge is on the 14" side).

Part #	Description	Opening Size	Door Size	Minimum Duct Height	Packaging Quantity	Weight
DW66UL* DWH66UL*	UL Door Only	6" x 6"	8" x 8"	9"	5	20.0 lbs. 23.0 lbs.
DW66ULWS* DWH66ULWS*	UL Door with Insulation Kit and 12" x 12" Outer Plate	6" x 6"	8" x 8"	9"	5	26.7 lbs. 42.5 lbs.
DW106UL* DWH106UL*	UL Door Only	10" x 6"	12" x 8"	9"	5	38.1 lbs. 32.5 lbs.
DW106ULWS* DWH106ULWS*	UL Door with Insulation Kit and 16" x 12" Outer Plate	10" x 6"	12" x 8"	9"	5	34.95 lbs. 56.5 lbs.
DW1010UL* DWH1010UL*	UL Door Only	10" x 10"	12" x 12"	13"	5	40.0 lbs. 40.9 lbs.
DW1010ULWS* DWH1010ULWS*	UL Door with Insulation Kit and 16" x 16" Outer Plate	10" x 10"	12" x 12"	13"	4	53.0 lbs. 55.0 lbs.
DW128UL* DWH128UL*	UL Door Only	12" x 8"	14" x 10"	11"	5	46.22 lbs. 41.3 lbs.
DW128ULWS* DWH128ULWS*	UL Door with Insulation Kit and 18" x 14" Outer Plate	12" x 8"	14" x 10"	11"	4	53.0 lbs. 53.7 lbs.
DW1814UL* DWH1814UL*	UL Door Only	18" x 14"	20" x 16"	17"	2	32.6 lbs. 34.0 lbs.
DW1814ULWS* DWH1814ULWS*	UL Door with Insulation Kit and 24" x 20" Outer Plate	18" x 14"	20" x 16"	17"	2	53.0 lbs. 52.0 lbs.
DW2020UL* DWH2020UL*	UL Door Only	20" x 20"	22" x 22"	23"	1	34.95 lbs. 36.9 lbs.
DW2020ULWS* DWH2020ULWS*	UL Door with Insulation Kit and 26" x 26" Outer Plate	20" x 20"	22" x 22"	23"	1	34.95 lbs. 37.0 lbs.
DW2418UL* DWH2418UL*	UL Door Only	24" x 18"	26" x 20"	21"	1	23.5 lbs. 24.3 lbs.
DW2418ULWS* DWH2418ULWS*	UL Door with Insulation Kit and 30" x 24" Outer Plate	24" x 18"	26" x 20"	21"	1	36.0 lbs. 36.8 lbs.
ULINSULKIT	Kit 1: Four 8" extension studs, washers, fasteners, "Do Not Obstruct" stickers, and installation instructions				5	1.12 lbs.
OP_UL* INSERT SIZE	Kit 2: UL Door Outer Plate				1	Consult Factory

Custom Sizes Available Upon Request - Additional lead times may apply



Unlike the ULtimate Sandwich® style door, the ULtimate II weld on door requires minimal additional clearance. The duct only needs to be large enough to accommodate the frame and satisfy the NFPA 96 Standard. Although the frame only extends 1" past each side of the opening, the NFPA 96 standard requires a minimum of 1.5" clearance between the opening and all seams or edges. Therefore, a minimum of 1.5" clearance is recommended on each side of the opening. In order to use the minimum duct height, the door must be installed with its longest dimension running horizontally along the length of the duct.

Listed
88VF
Fittings for Hood and
Duct Penetration
Grease Duct Access Door



LIMITED PRODUCT WARRANTY

Ductmate warrants that ULTimate™ Doors when properly installed and maintained, will be free from defects in material and workmanship, and will comply with all written specifications made by Ductmate at the time of sale. Ductmate's warranty shall run for a period of one year from the date of manufacture.

Warranty Product Limitation:

The warranty stated above is in lieu of all other warranties, express or implied, including but not limited to the implied warranties of MERCHANTABILITY AND FITNESS FOR A PARTICULAR PURPOSE. Although Ductmate may have suggested the product, or provided written or oral advice to the Purchaser, it is the Purchaser's responsibility to test and determine the suitability of ULTimate™ Doors for the intended use and purpose, and Purchaser and/or its customer assumes all risk and liability whatsoever regarding such suitability.

Limitation of Liability:

In the event of a breach of the above warranty, Ductmate's sole obligation, and Purchaser's sole and exclusive remedy, shall be, at Ductmate's option, repair or replacement of any defective products, or refund of an applicable portion of the purchase price. Ductmate shall have no liability for costs of removal or reinstallation of the product. The Purchaser agrees that no other remedy, including but not limited to loss of profits, loss sales, injury to person or property, or any other special, incidental or consequential damages, shall be available to the Purchaser for any claim arising out of this Agreement, regardless of whether such claim is made in contract or in tort, including strict liability in tort. In no event will Ductmate be obligated to pay damages to the Purchaser in any amount exceeding the purchase price that the Purchaser paid to Ductmate for the allegedly defective product. This product must be used in conjunction with the correct duct diameter.



Charleroi, PA
210 Fifth Street
Charleroi, PA 15022
724-258-0500

Lodi, CA
810 S. Cluff Avenue
Lodi, CA 95240-9141
209-333-4680

*Additional Manufacturing and Warehousing in
Monongahela, PA and Wagoner, OK*

1-800-245-3188 • www.ductmate.com

© Copyright Ductmate Industries. All rights reserved.



Ductmate Is A Proud Member Of The Following Organizations:



Distributed By: