

HangPro

Versatile Adjustable Cable Hanger

Suitable for hanging a variety of building services with ease, including ductwork, cable basket, lighting and displays.

- **Easy Adjustment** - Even after the full load is applied, the hanger can still be adjusted (if the load is supported), making it even easier and versatile to use
- **Patented Wire Entry Gate** - Guides the cable correctly, minimizing the risk of improper installation
- **Traceable** - Each hanger comes with a unique batch number, ensuring quality and easy traceability
- **Safe** - Backed by extensive testing, offering industry-leading performance reassurance



Product Specification

Material

- Housing - Zinc Alloy (ZL2)
- Buttons - Nylon
- Wedge - Sintered Steel
- End Caps - Polypropylene
- Springs - Stainless Steel

Compatibility

- Cable Diameter – No.2 (5/64")
- Cable Nominal Tensile Strength – 1960 MPa
For use only with 7 x 7 construction, Pre-Galvanised Class B Wire Rope, Manufactured to BS EN 12385
- Cable Construction – 7 x 7
- Maximum Inclusive Angle – 60°
- Minimum Tail Cable Length – 4"
- Corrosion Classification – C1 indoor and C2 indoor

Performance

| Cable Diameter | Safe Working Load |
|----------------|-------------------|
| No.2 (5/64") | 120 lbs |

- Safety Factor 5:1
- Operating Temperature Range -
-4°F ~ +158°F

Approvals

- Underwriters Laboratories (UL Listed)
 - UL listed per UL 2239 Conduit & Cable Hardware. File No. DWMU.E251132 - PENDING
 - UL listed and recognized for use in air handling spaces (Plenum Rated) per UL 2043. - File No. R38596
 - UL listed per UL 1598, the standard for luminaires. File No. E228153
- International Code Council Evaluation Service (ICC-ES), PMG-1408. Compliant with USA Building Codes, Hangers for pipe, duct and conduit support. Approval covers:
 - International Building Code (IBC)
 - International Mechanical Code (IMC)
 - International Plumbing Code (IPC)
 - SMACNA Duct Construction Standard 4th edition



Albany Steel & Brass Corporation

**Distributors of Fasteners and
Industrial / Construction Supplies Since 1918**

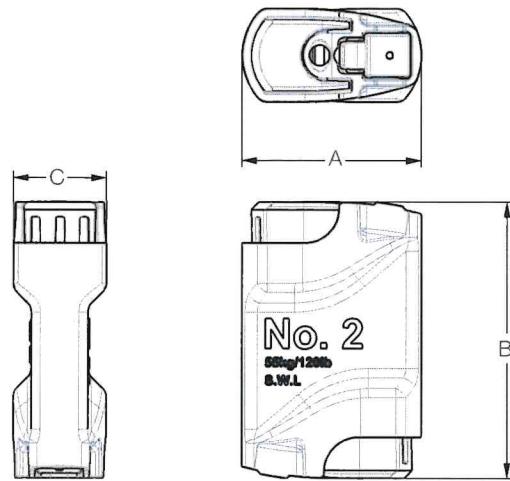
1900 W. GRAND AVE. CHICAGO, IL 60622
PHONE: 312-733-1900 FAX: 312-733-9887

www.sales@albanysteel.com

ISO 9001-2008

www.albanysteel.com

Design & Dimensions

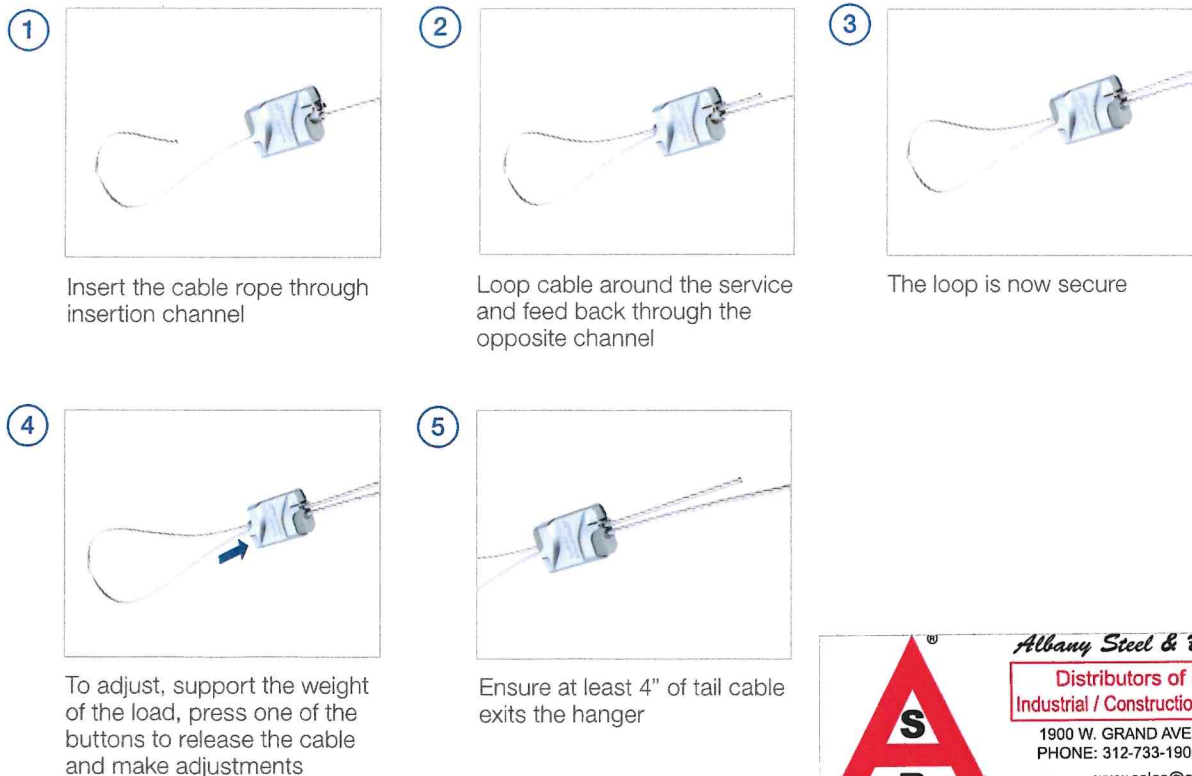


| | In |
|---|------|
| A | 0.83 |
| B | 1.3 |
| C | 0.43 |

Packaging

- **Compatible End Fixings:** All standard end fixings are available, please refer to End Fixings on the Gripple website.
- **Cable Length:** Available in standard cable lengths 5 ft - 30 ft. Contact the Gripple Sales Team if alternate cable lengths are required.
- **Kit Contents:** Standard kits come with 10x HangPro and 10x cable with Factory Fitted End Fixings. Contractor Packs and Bulk options are available, please speak to the Gripple Sales Team.

Installation



Albany Steel & Brass Corporation

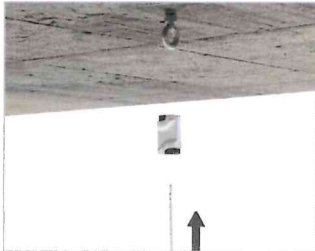
Distributors of Fasteners and Industrial / Construction Supplies Since 1918

1900 W. GRAND AVE. CHICAGO, IL 60622
 PHONE: 312-733-1900 FAX: 312-733-9887

www.sales@albanysteel.com
 ISO 9001-2008 www.albanysteel.com

HangPro Y-Fit Installation

①



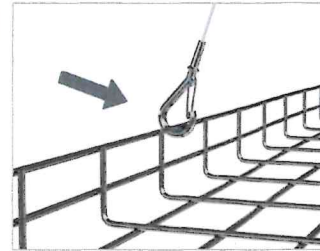
Feed the Y-Fit tail cable through one of the HangPro channels and then loop the tail cable through the ceiling anchor or Y-Fit loop

②



Feed the tail back through the HangPro and adjust to correct height. Ensure at least 4" of tail cable exits the hanger

③

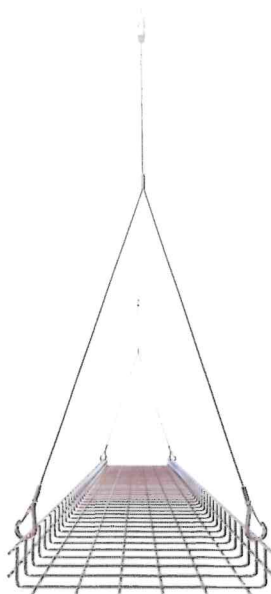


Connect the Y-Fit end fixings to the service being suspended

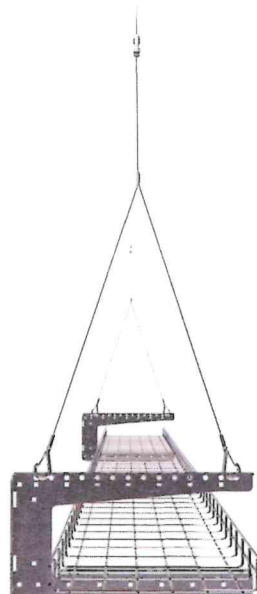
Installation Guidance



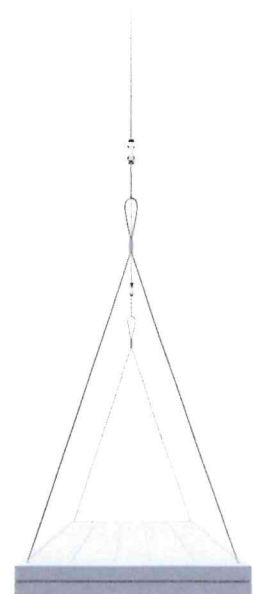
Y-Fit Accessory with Snap Hook on Radiant Panel



Y-Fit with Snap Hook on Cable Tray



Y-Fit Snap Hook on G-Bracket with Cable Basket



Y-Fit Accessory with Toggle on Light Fitting

Albany Steel & Brass Corporation
Distributors of Fasteners and Industrial / Construction Supplies Since 1918
 1900 W. GRAND AVE. CHICAGO, IL 60622
 PHONE: 312-733-1900 FAX: 312-733-9887
www.sales@albanysteel.com
 ISO 9001-2008 www.albanysteel.com

Key Recommendations

Failure to comply with these recommendations may result in product malfunction and possible damage to property or person and will invalidate the GripplE guarantee. GripplE products are guaranteed to be free from defects in materials and workmanship in accordance with our terms and conditions. No other warranty, whether express or implied, including any warranty of merchantability or fitness for purpose shall exist in connection with the sale or use of any GripplE product.

Full technical information and installation instructions should be obtained directly from GripplE Limited, GripplE Europe, GripplE Inc., GripplE Japan, GripplE Poland, GripplE India, GripplE Germany, any regional GripplE office, or via our website www.gripplE.com.



LOADS

Always operate the product within its stated safe working load range. Suspend static loads only. Do not subject to shock loading. Do not adjust under load.



LIFTING

Do not use for lifting, either by crane or as part of a pulley system.



IMPACT

If there is potential for impact on the wire rope suspension or suspended services, seek advice from GripplE Ltd. Technical Services prior to installation.



HANGING AT AN ANGLE TO VERTICAL

Ensure that the load calculation considers the effect of 'side load'. For example, at an angle of 60° to vertical the SWL is effectively reduced by 50%.



DUCTING

When installing included angle teardrop hangers on round/spiral ducting or pipes, the final included angle of the assembly should not exceed 60°.



ENVIRONMENT

Do not use in chlorinated or chemically corrosive atmospheres. Standard hangers are for use in dry and air conditioned environments only. Stainless steel hangers should be considered for high to saturated humid environments after validation by a competent person.



SWIMMING POOLS

Not suitable for swimming pools.



TRACEABILITY

Always use the GripplE hanger with the specified wire rope supplied by GripplE. GripplE products should only be used with products supplied by GripplE Ltd., and the warranty will not apply if our products are used with any products supplied by third parties.



LUBRICATION

Do not apply oil or any other lubricant to the hanger or any other part of the assembly.



WIRE ROPE

Trim any damaged filaments with the wire cutter before use.



INSTALLATION

Do not walk or stand on the GripplE product installation. GripplE products must not be used for personal suspension, fall protection or harnessing people.



PAINTING

Do not paint the hanger prior to installation. Ensure the hanger is in its final position prior to applying any paint to the wire rope assembly. Do not move the fastener after painting.



STORING

Do not store the product outdoors, or in damp or abnormal conditions.



Y-FIT

Legs on Y-Fit not to be installed greater than 60°.



REPAIR, MODIFICATION AND RE-USE

Do not repair, modify or re-use GripplE products. If you have any queries regarding product performance, please contact TechnicalServices@gripplE.com



JOINING

Never join two ends together in-line.



Albany Steel & Brass Corporation

Distributors of Fasteners and Industrial / Construction Supplies Since 1918

1900 W. GRAND AVE. CHICAGO, IL 60622
PHONE: 312-733-1900 FAX: 312-733-9887

www.sales@albanysteel.com

ISO 9001-2008 www.albanysteel.com