

# 3" Long Tabbed Start Collar



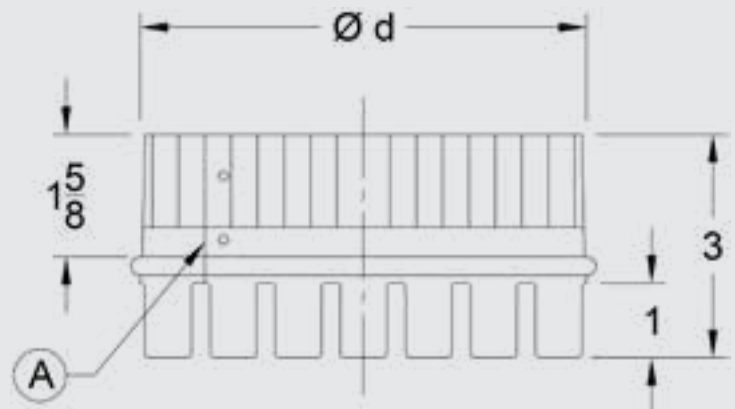
## Technical Data

- GSI Collars are designed and tested to surpass SMACNA Class 3 Leakage Standards.
- Pre-sealed with gasket made of EPDM rubber and proprietary co-polymer
- Zero VOCs
- Galvanized Steel (ASTM A653 and A924)
- Standard product is supplied in 26 GA, G-60 coating (ASTM A653 and ASTM A90)
- Available in Specialty Metals:
  - G-90 Galvanized Steel
  - Aluminum (ASTM B209 Alloy 3003 Temper H14)
  - 304 Stainless Steel (ASTM A480 2B Finish)
- Pressure Rating: Designed per SMACNA Third Edition 2005 Section 4.8 Figure 4-6 Branch Connections
- Dimensional Tolerance:  $\pm 1/4"$

## Product Availability

Size (Ød)	Gauge Availability		Quantity	
	26 Ga.	24 Ga.	Carton	Skid
4"	Yes	-	60	780
5"	Yes	Yes	60	780
6"	Yes	Yes	50	600
7"	Yes	Yes	40	480
8"	Yes	Yes	40	480
9"	Yes	Yes	40	480
10"	Yes	Yes	40	480
12"	Yes	Yes	20	240
14"	Yes	Yes	10	120
16"	Yes	Yes	10	120
18"	Yes	Yes	10	120
20"	Yes	Yes	10	120
22"	‡	‡	‡	‡
24"	‡	‡	‡	‡

‡ Consult factory for availability.



A. Collars now come standard with sealed joints! The riveted seam is sealed with the GreenSeam integral gasket. Unsealed fittings are available upon request.

## Part Number Schematic

Example: **3SCCR10GA26\*\*** = 3" Long Tabbed Collar for 10" Pipe in 26Ga. Galvanized Steel

3	SC	C	R	10	GA	26
Collar Length	Tabbed Start Collar	End C - Crimped (Std.)	Riveted	Collar Diameter (Ød)	Material GA-Galvanized (Std.) AL - Aluminum S4 - 304 S.S	Gauge GA - 26, 24 AL - 32 S4 - 26

\*\* Add 90 for G90 Galvanized Coating

Items in green denote other available features

Check with your sales representative for availability of any size, gauge, or specialty metal item not shown here.